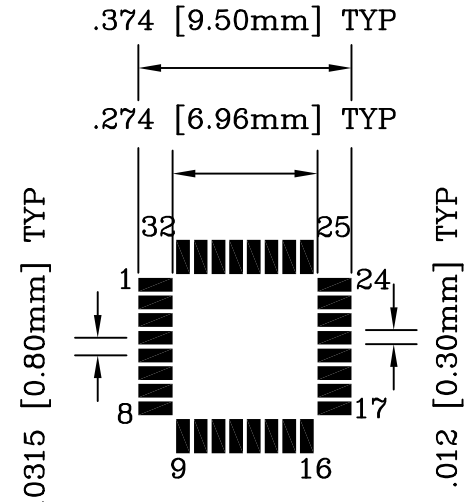
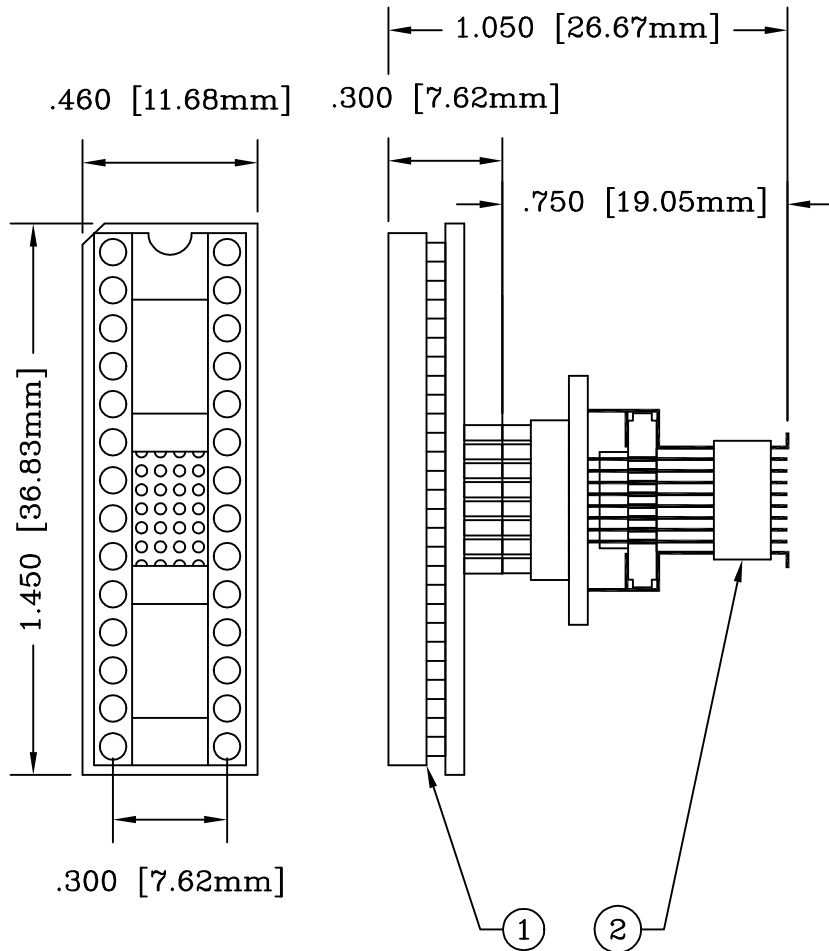


REV	DESCRIPTION	DATE	BY
A	NEW DRAWING	01/05/99	J.G.
B	UPDATED DIMS & ADDED PIN TABLE	10/10/02	H.N.

F5769
DOD 35769

PIN CONNECTIONS TABLE

PDIP		TQFP
PIN #	NET NAME	PIN #
1	(RESET) PC6	29
2	(RXD) PD0	30
3	(TXD) PD1	31
4	(INT0) PD2	32
5	(INT1) PD3	1
6	(XCK/T0) PD4	2
7	VCC	4
8	GND	5
9	(XTAL1/TOSC1) PB6	7
10	(XTAL2/TOSC2) PB7	8
11	(T1) PD5	9
12	(AIN0) PD6	10
13	(AIN1) PD7	11
14	(ICP) PB0	12
15	PB1 (OC1A)	13
16	PB2 (SS/OC1B)	14
17	PB3 (MOSI/OC2)	15
18	PB4 (MISO)	16
19	PB5 (SCK)	17
20	AVCC	18
21	AREF	20
22	GND	21
23	PC0 (ADC0)	23
24	PC1 (ADC1)	24
25	PC2 (ADC2)	25
26	PC3 (ADC3)	26
27	PC4 (ADC4/SDA)	27
28	PC5 (ADC5/SCL)	28
NC	GND	3
NC	VCC	6
NC	ADC6	19
NC	ADC7	22



RECOMMENDED MINIMUM PAD LAYOUT

ALL DIMENSIONS ARE IN INCHES UNLESS OTHERWISE SPECIFIED



**Emulation Technology, Inc.**  
— VLSI and SMT ADAPTERS and ACCESSORIES —

2344 Walsh Avenue, Bldg.F Santa Clara, Ca 95051  
TEL:(408)982-0660 FAX:(408)982-0664

NO.	ITEM	DESCRIPTION	QTY.
1	AX-28D3-Q59D-90	TOP SUB ASSEMBLY	1
2	EPP032QF59DSM	BOTTOM SUB ASSEMBLY	1

SHEET: 1 OF 1	DATE: 10/10/02	REVISION: B	<b>ASSEMBLY DRAWING</b>
CHECKED: Perry Munroe	DRAWN: Huy Nguyen	ITEM: AS-V-590S	
Scale 1:2	DO NOT SCALE DRAWING	DESCRIPTION: AS-DIP.3-QF59DS-90S2333	