

Installation Guide

BL-565 Bluetooth Compact Flash Card in WindowsXP

Version: 1.0





Declaration of Conformity

Bluetooth Compact Flash Card – Rev 5. Product Code: BL-565

We, Brain Boxes Limited, of Unit 3c Wavertree Boulevard South, Wavertree Technology Park, Liverpool L7 9PF, United Kingdom declare that the Product listed above is in conformance with the essential requirements of the European Council Directive:

1999/5/EC (R & TTE)	Radio and Telecommunications Terminal Equipment Directive (following Annex III of this Directive)
---------------------	---

The essential requirements being:

Safety of the user (Article 3.1a)	Following directive 73/23/EEC; 93/68/EEC
Electromagnetic Compatibility (article 3.1b)	Following directive 89/336/EEC
Effective use of the spectrum (article 3.2)	Following notified body opinion from ETS Dr Genz, GmbH, Storkower Strasse 38c, D-15526, Reichenwalde bei Berlin, Germany

This declaration is based upon compliance with the following standards:

EN 60950: 1992; EN60335-1: 1994	Safety information Technology Equipment, including Electrical Business Equipment
ETS 300 826; EN 301 489-1/-17: 2000; EN50081 – 1: 1992; EN 50082 – 1: 1997	Electromagnetic compatibility
ETS 300 328-2: 2000	Radio Equipment and Systems (RES); Wideband transmission systems; Technical characteristics and test conditions for data transmission equipment operating in the 2.4 GHz ISM band and using spread spectrum modulation techniques.

This Declaration is made under our sole responsibility.

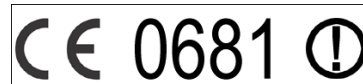
Authorised Signatory:

Date: 07 June 2002

P M Gray
Brain Boxes Limited
Unit 3c Wavertree Boulevard South
Wavertree Technology Park
Liverpool L7 9PF, UK

Regulatory Information

Bluetooth product operating in 2.4GHz band for Home and Office use.



Europe – EU Declaration of Conformity

This device complies with the R&TTE Directive 1999/5/EC, and the following standards:

EN 60950: 1992; EN60335-1: 1994	Safety information Technology Equipment, including Electrical Business Equipment
ETS 300 826; EN 301 489-1/-17: 2000; EN50081 – 1: 1992; EN 50082 – 1: 1997	Electromagnetic compatibility
ETS 300 328-2: 2000	Radio Equipment and Systems (RES); Wideband transmission systems; Technical characteristics and test conditions for data transmission equipment operating in the 2.4 GHz ISM band and using spread spectrum modulation techniques.

Important Notice for use in France and Italy

Italy: License required for use. Your reseller will tell you the procedure to follow. E' necessaria la concessione ministeriale anche per l'uso. Verification con i rivenditori la procedura da seguire.

France: Low power device (1mW), there is no limitation for indoor or outdoor use. Dispositif à faible puissance (1mW), pas de limitation pour son usage à l'intérieur ou à l'extérieur.

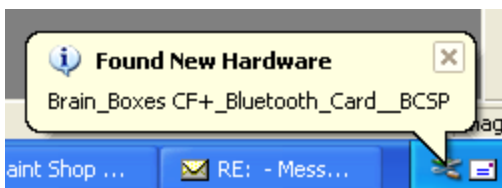
BL-565 Bluetooth Compact Flash+ Installation

This section will give you all the information that is needed to install your Brain Boxes Bluetooth Compact Flash Hardware into your computer running the WindowsXP Operating system.

Insert the Bluetooth Product CD into your CDROM drive.

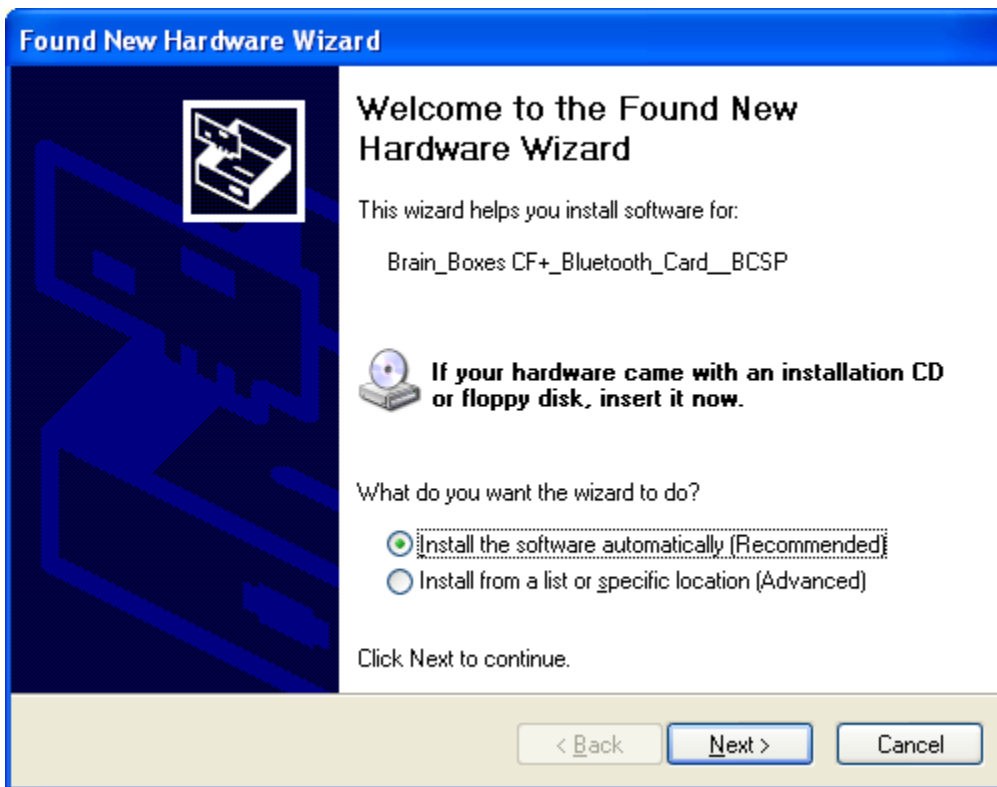


Insert the Compact Flash Card into an appropriate slot. You may need to insert the card into a PC Card Sleeve to use this in a Laptop or similar. The following screen appears



A short while later the “found new hardware wizard” will appear

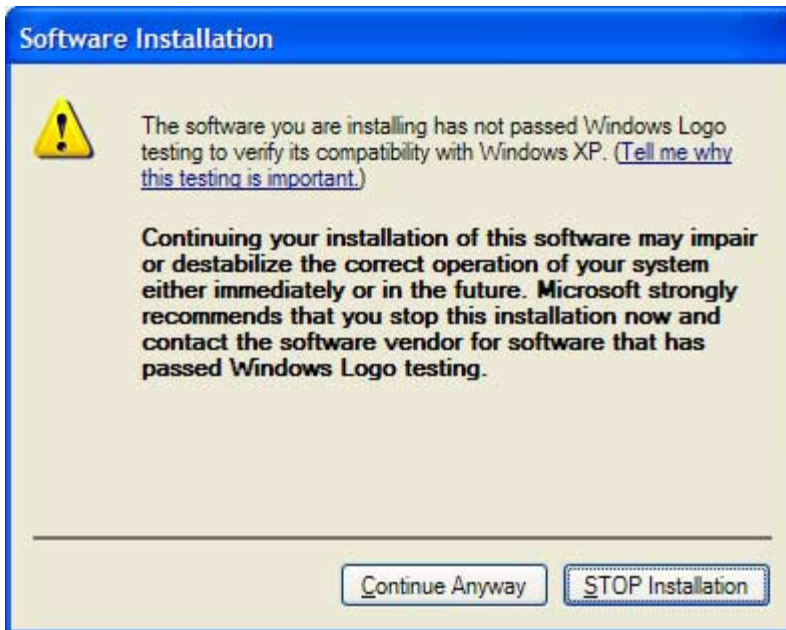
If your Brain Boxes Bluetooth Product CD is not inserted you will see the following screen – Select “Install the software automatically”



Assuming that the Brain Boxes Bluetooth Product CD is inserted into an available drive, the following screen should appear. If the CD is not inserted, you will see the insert it now and click next

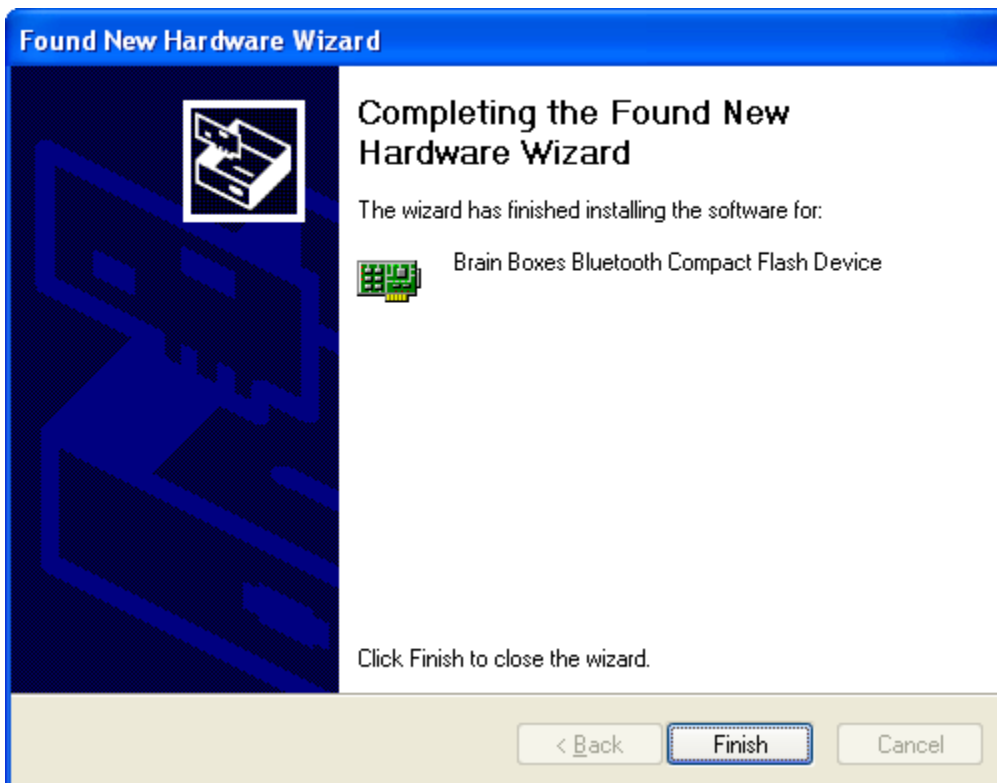


The necessary files will be found and copied by windows.

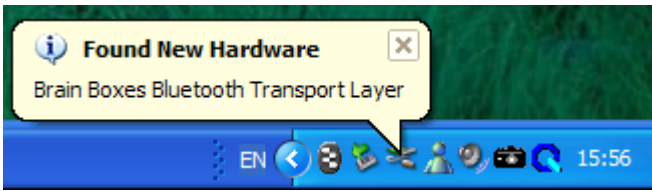


At time of publication it is not possible to get Bluetooth software logo tested, so you should just “continue anyway”

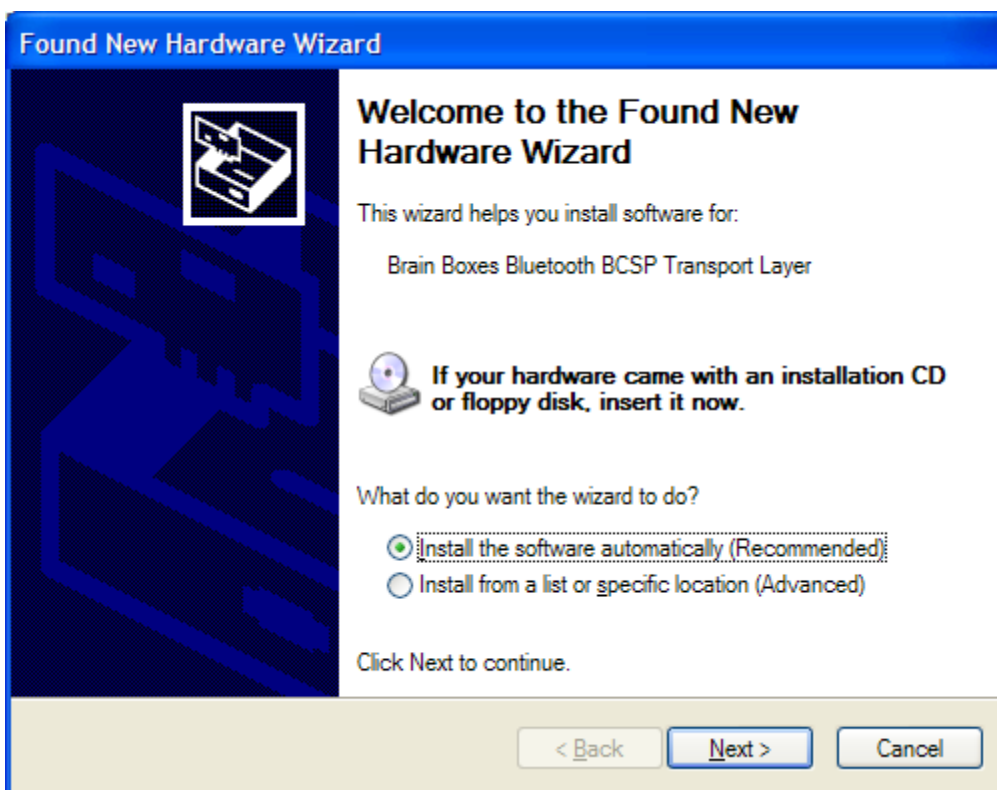
This screen will appear twice – Click “Continue Anyway” for each occasion.

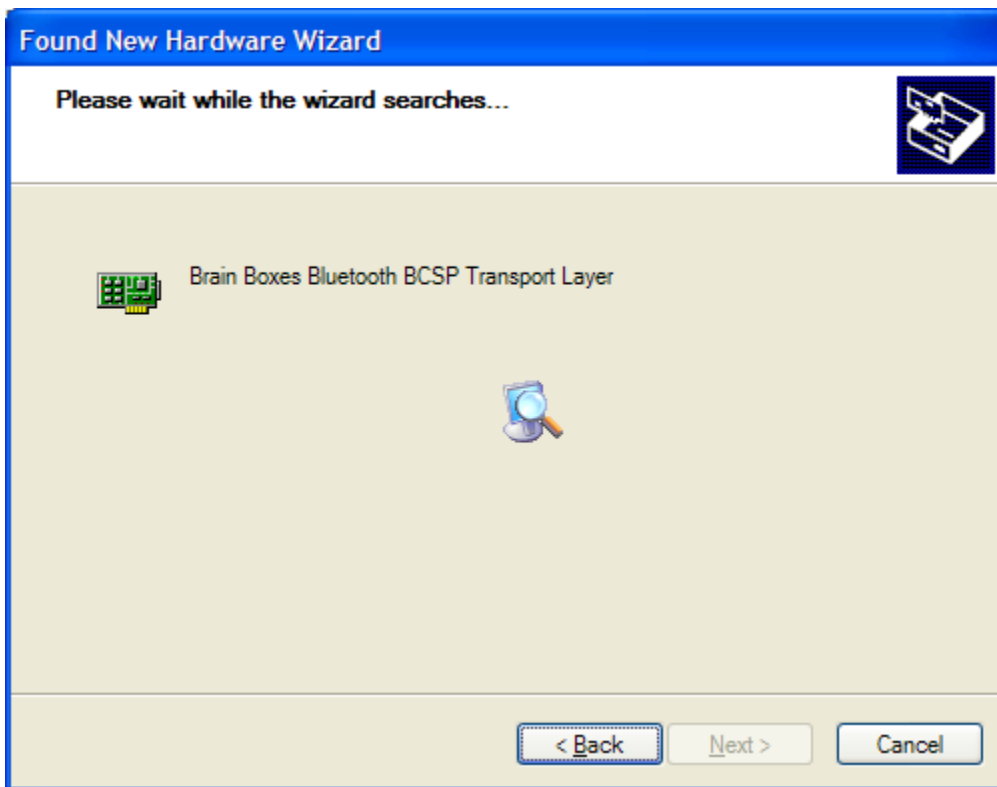


Click "Finish". Windows will now install all the remaining layers of software necessary for your Bluetooth device to operate..

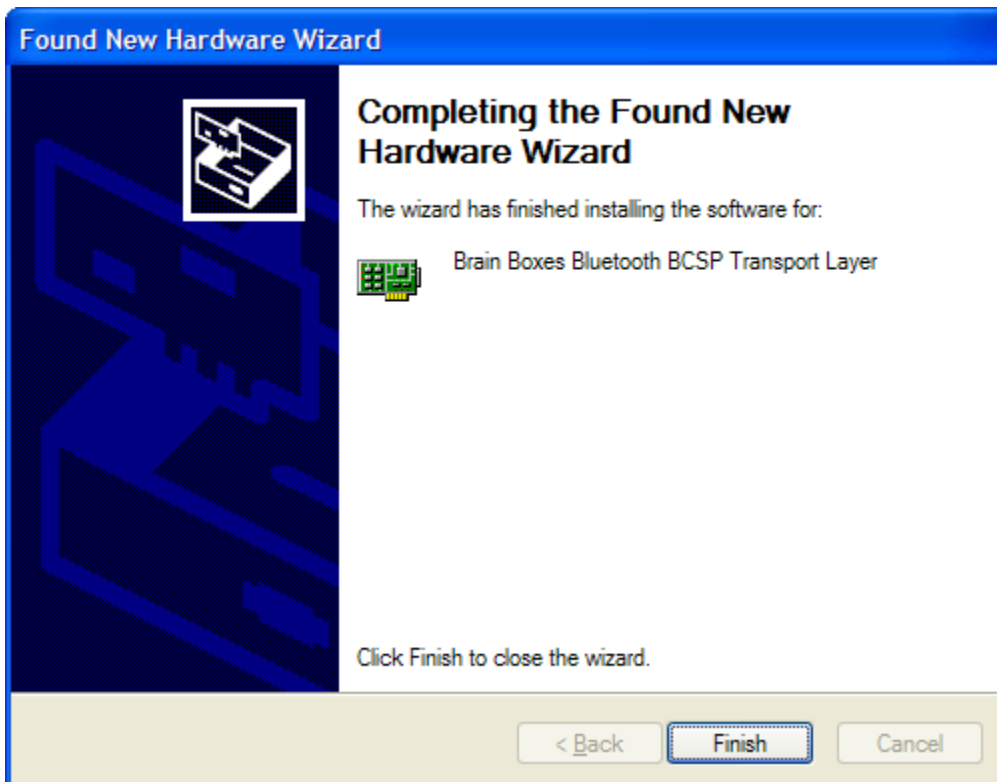


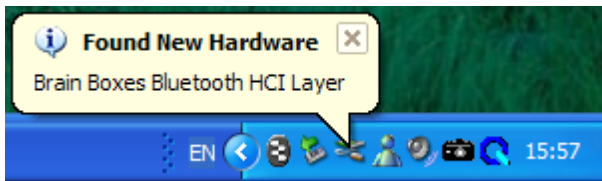
Select "Install the software automatically" and click "Next".



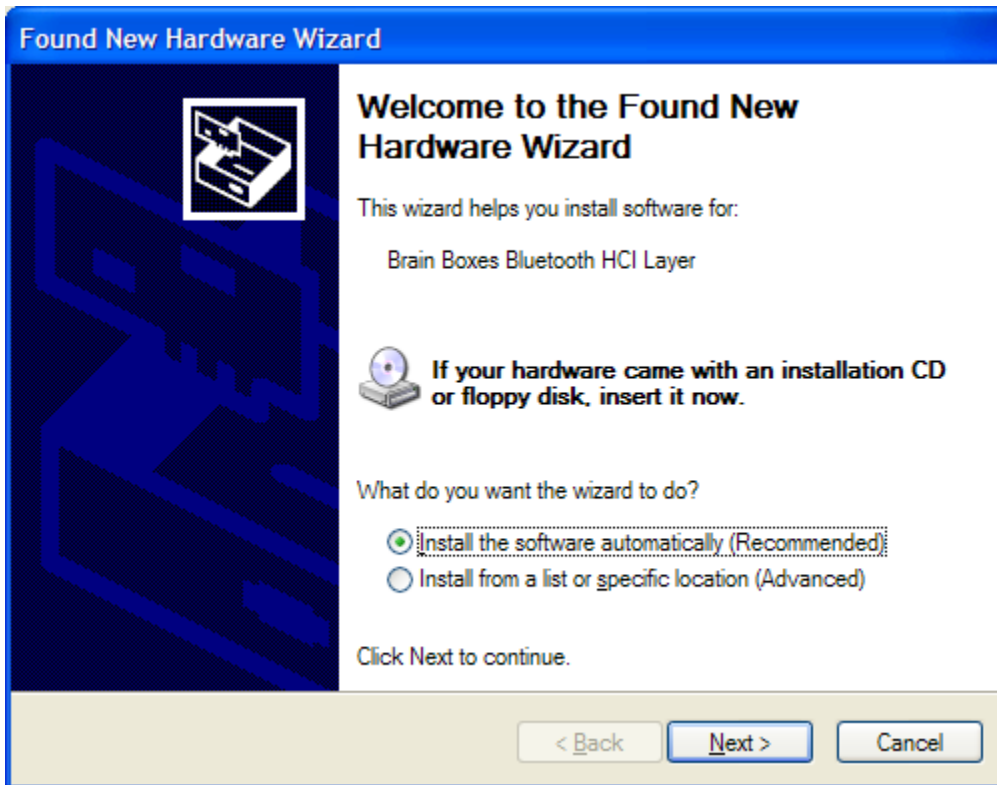


Click Finish

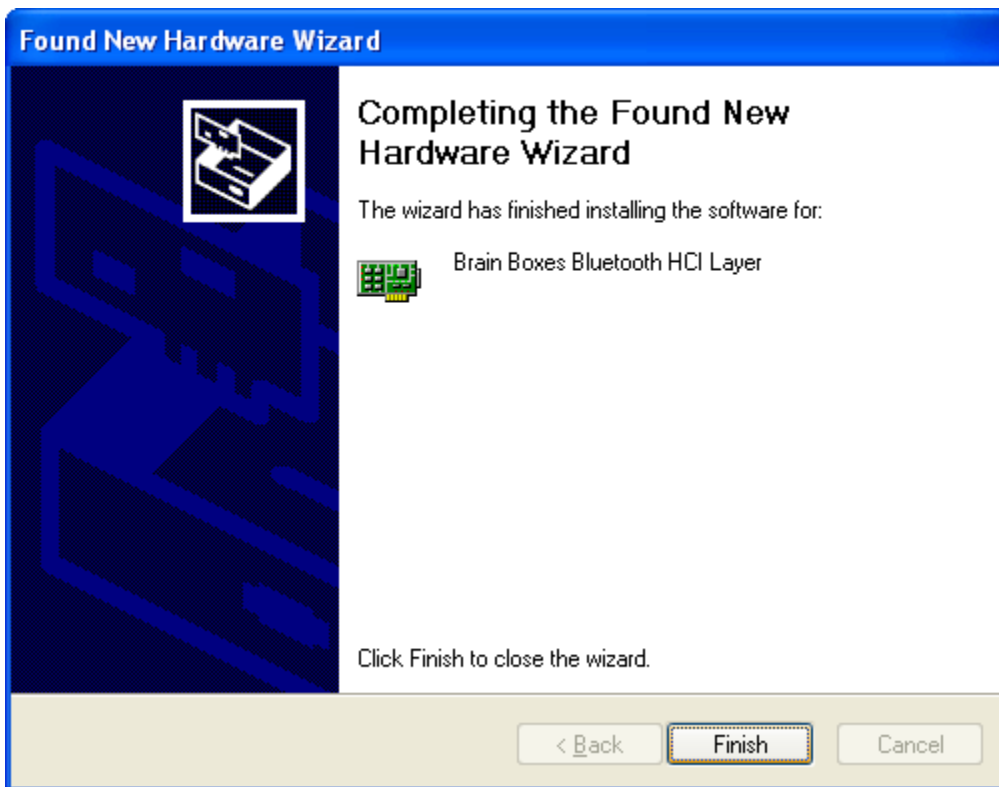




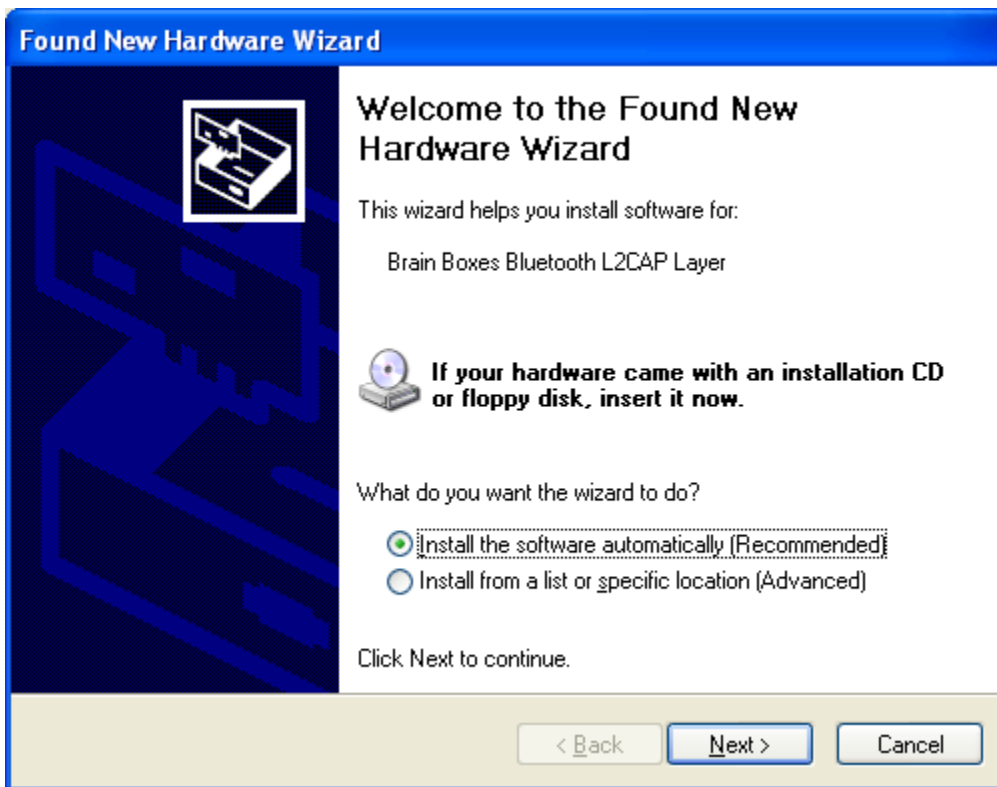
Select "Install the software automatically" and click "Next".



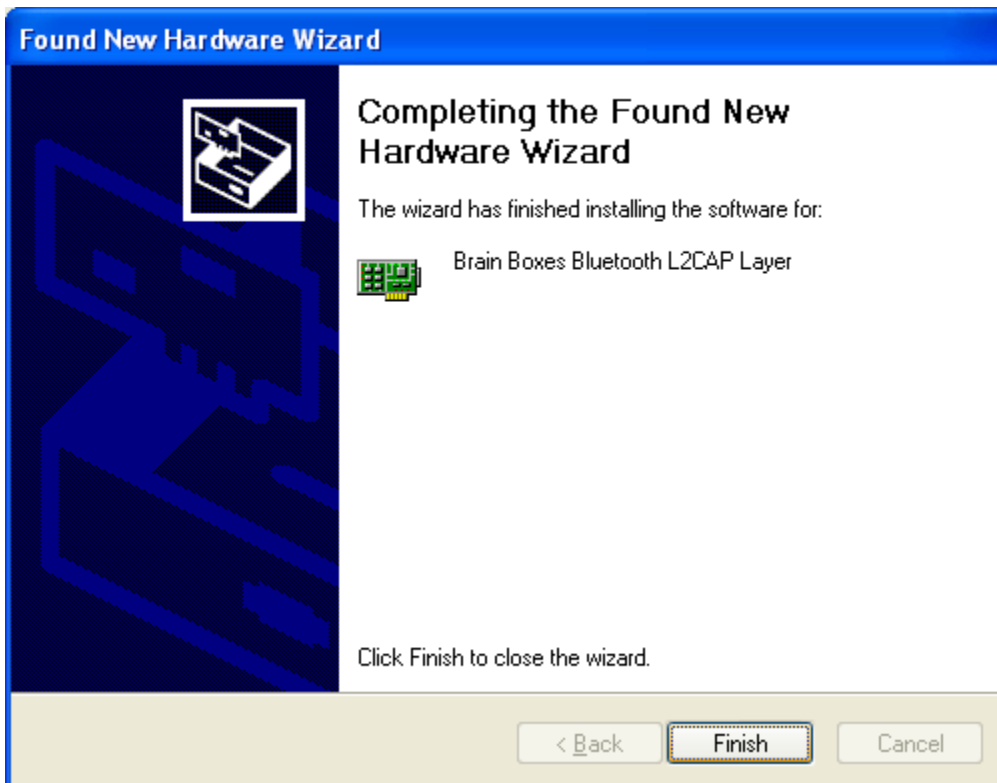
Click Finish



Select "Install the software automatically" and click "Next".

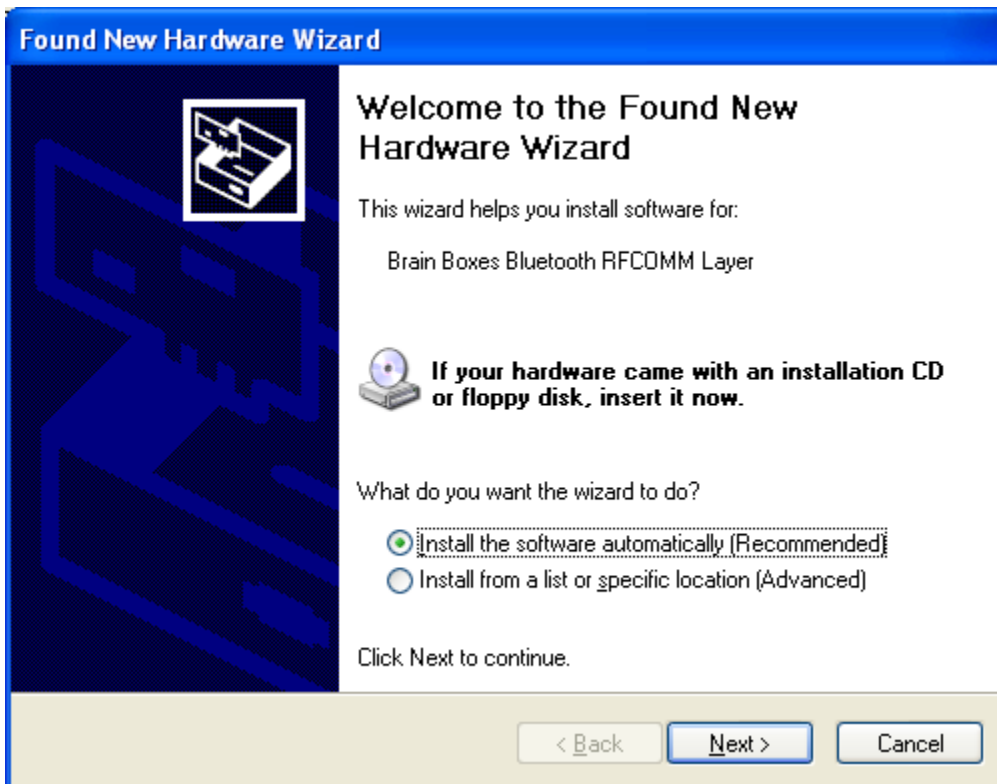


Click Finish

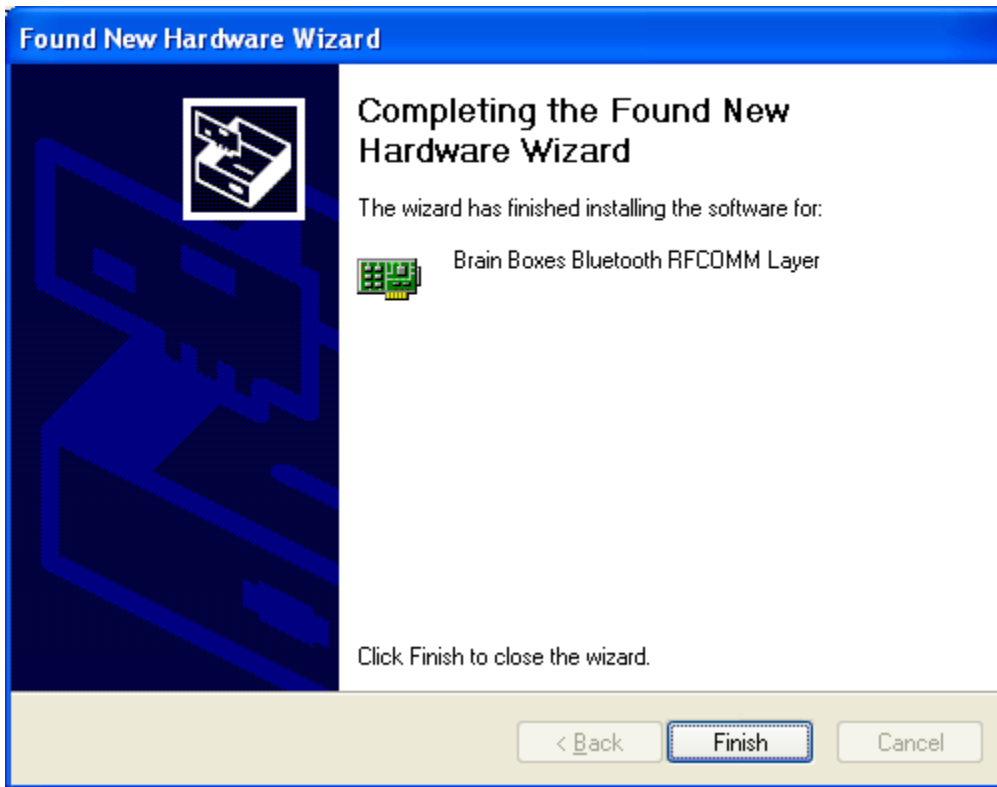




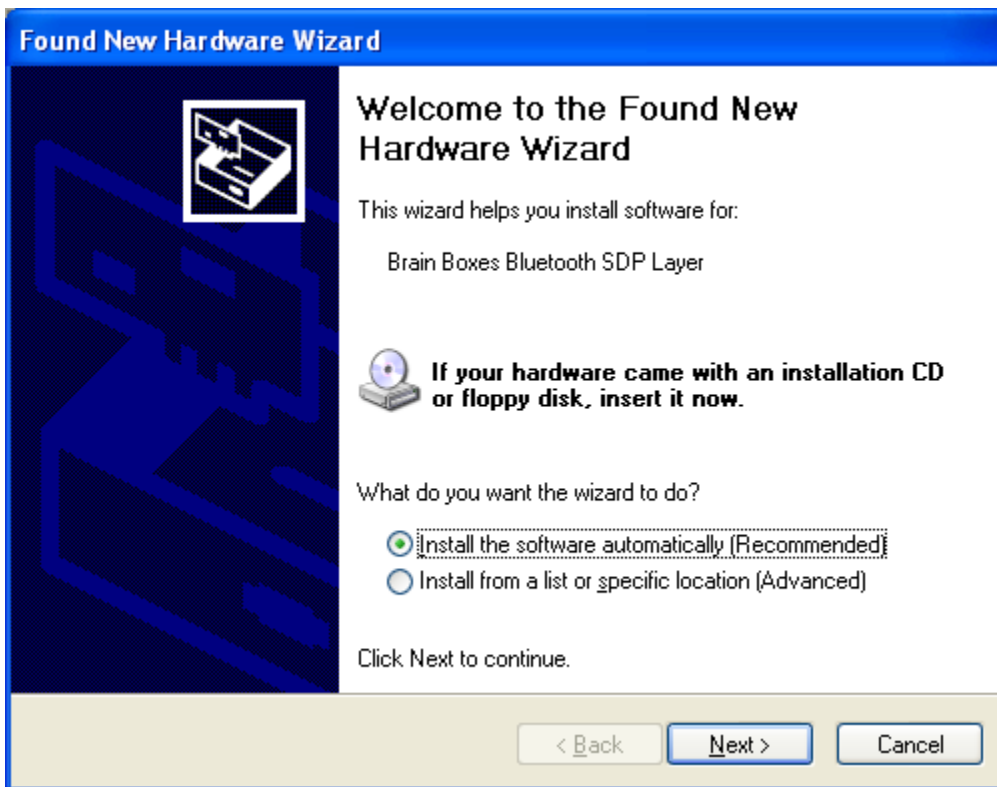
Select "Install the software automatically" and click "Next".



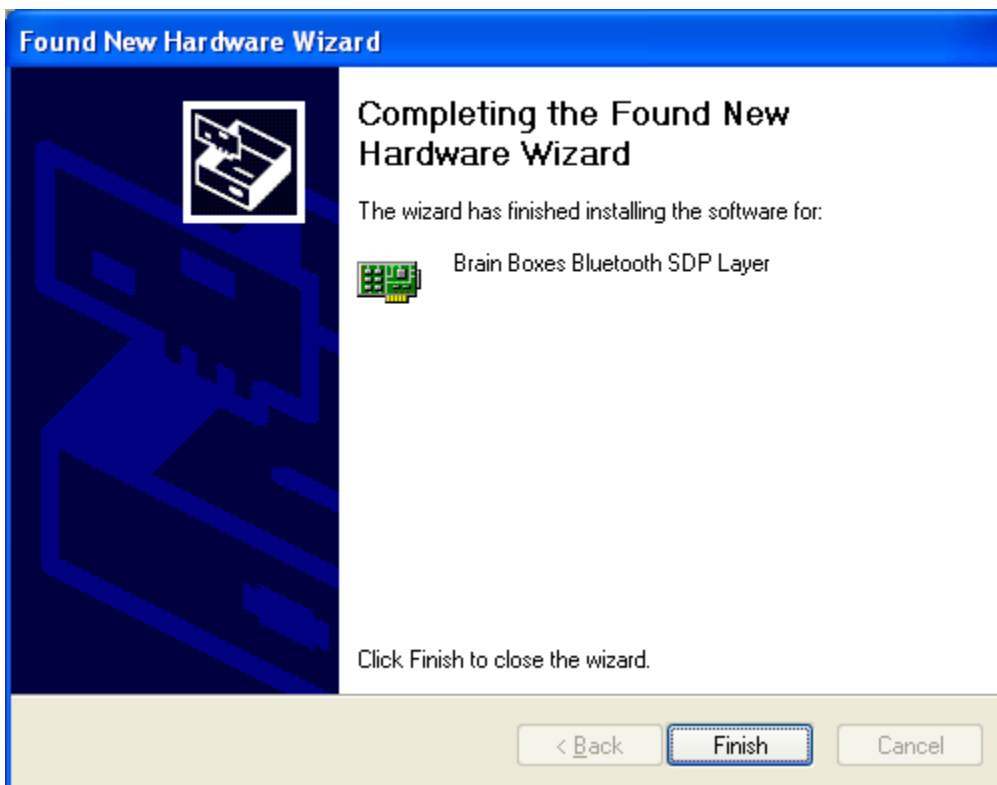
Click Finish

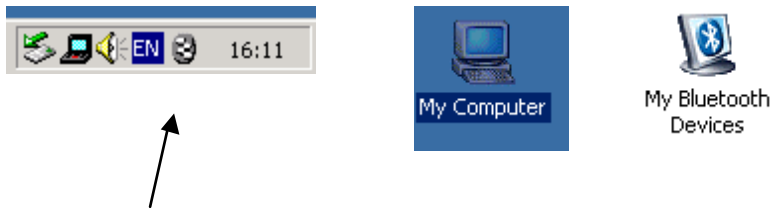


Select "Install the software automatically" and click "Next".



Click Finish





A My Bluetooth devices icon will now appear in the My Computer folder on your desktop. Double clicking on this icon will open the My Bluetooth Devices user interface which will enable you to configure your card and establish connections with other bluetooth enabled devices.

The Brain Boxes Bluetooth icon found in the icon tray on your start bar can also be used to access this user interface.

Full details of the My Bluetooth Devices user interface can be found in the configuration chapter.

Version History

Version	Date	Author	Checked By	Comments
1.0	13/05/2002	Gavin Jewell	Name	Using Beta4