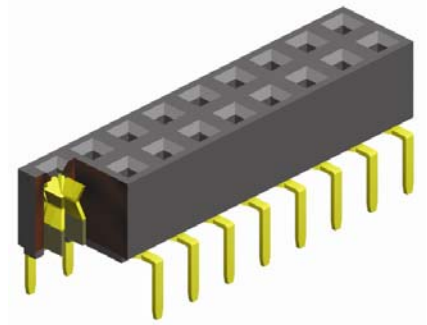
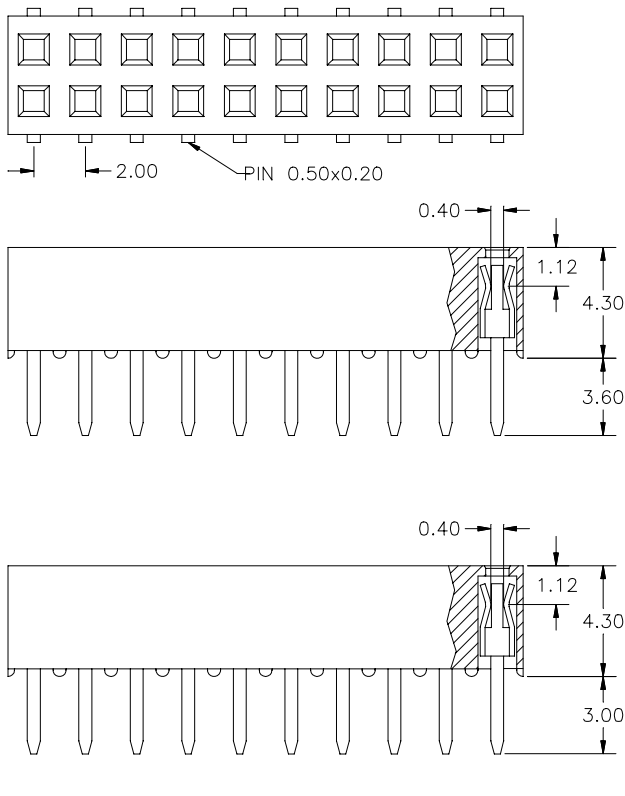


2.00mm pitch Female Header

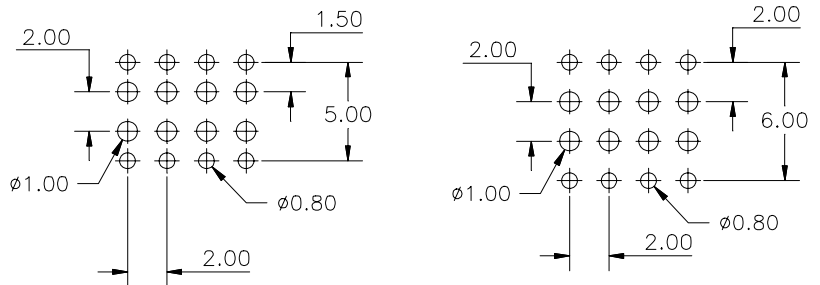
- THT - Dual Entry Type



SPECIFICATIONS

Current rating	1 A
Insulator resistance	5000 MΩ min.
Contact resistance	20 mΩ max.
Dielectric withstanding voltage	500 V AC
Operating temperature	- 40° to +105°C
Processing temperature	+250°C +0/-5°C for 20sec.
Contact material	(RoHS compliant) Phosphor Bronze
Insulator material	(RoHS compliant) Nylon UL 94 V-0

PCB Hole Layout



APPLICATION AND FEATURES

Dual entry low profile 4.30mm height
 Designed for parallel and vertical board stacking
 Dual-beam folded contact and low insertion force, mating with 0,50 x 0,50mm Pin Header

How to order

BB2 - x xx - S430 - 55 /2

